

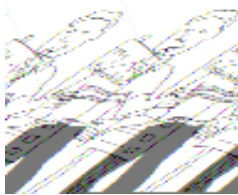


People at the meeting were asked to sign an attendance sheet. Due to the large number of people now attending, only Board members and guest speakers would be listed in the minutes.



Welcome and Introductions by Ray Wilk and Michael Cass

Ray Wilk welcomed everyone to the meeting and asked the Board members to introduce themselves. Bob Hood, who works for the Department of Works and Pensions, attended the meeting for the first time as the Board’s employment representative.



Presentation by Ray Wilk, Sue Lindsey, Jon Rudette, Sheila Quinn
Partnership Board Draft Statement of Values and Principles

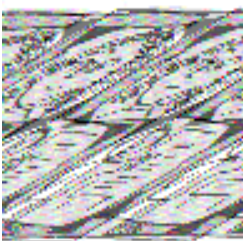
Ray Wilk gave an update on the Partnership Board draft Statement of Values and Principles. A few amendments have been made and it is now in an accessible format. There is also an information leaflet to give to people who have not heard of the Leeds Learning Disability Partnership Board, and a Contract which the Board members will be asked to sign to show they accept the values and promises made by the Board. Ray Wilk said that once the Board members had approved the documents, they can be printed for public circulation.



Sue Lindsay and Jon Rudette showed a PowerPoint presentation which explains how the Partnership Board was formed and what Valuing People say it should do – the details will be published in the information leaflet.

Sheila Quinn told the Board what happened at the Reference Group meeting held to discuss the documents. Service Users raised issues such as:-

- There should be a photograph of the Board members?
- What would happen to Board members who did not keep to the Contract?
- Some of the symbols need to be changed.
- The Board sponsors symbols should be on the leaflet.





Ray Wilk asked the Board for comments. After a discussion it was agreed that;

- the Board would look into having a group photograph taken and this photograph could also be used as a symbol to represent the Leeds Learning Disability Partnership Board in the future.
- where possible, alternative symbols could be used.
- all the Partnership Board statements would be added to the information leaflet.
- all Board members would sign the Contract.
- a code of behaviour is required to get a place on the Partnership Board and the Chair and Co-Chair have a responsibility to monitor behaviour. If a Board member damages the reputation or does not work with the organisation that sponsors their place on the Board, the Board member will be asked to behave properly or face being replaced by someone else from their organisation. This statement was supported by Dave Rosser.



Ray Wilk asked for volunteers from the Board to help finish the document and thanked everyone for all their efforts. Sue Lindsey to set up at meeting with the volunteers to finish the document.



Presentation by Janet Wright **Task Groups and Reference Groups**

Janet Wright explained why Valuing People asked all the Partnership Boards to set up Task and Reference Groups and she also explained the difference between the groups:-

- the Reference Groups collect the views of particular groups of people and feed back to the Partnership Board.
- the Task Groups are set up to deal with specific pieces of work.

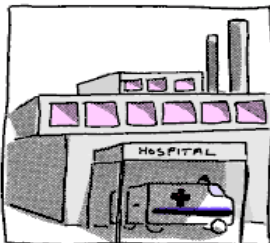


Janet Wright confirmed that the Partnership Board is advertising for an organisation to support a Carers Reference Group. The closing date for applications is 23rd June 2006 and details of the successful applicant will be brought back to the Board in September. The interviews for the organisation to support the Ethnicity Task Group will take place 21st June 2006 and this is as a direct result of the work carried out by the Ethnicity Reference Group.

Scott Cunningham explained the history and aims of the Advocacy Reference Group. A meeting was held to decide the priorities for Leeds. 5 priorities were identified and the 2 priorities to look at first are; helping people from black and minority ethnic backgrounds and helping people with high support needs. They are currently recruiting to help people with high support needs.



Dave Rosser reported that the Healthy Living Task Group (which is not directly linked to the Partnership Board) will be holding its first meeting on 14th July to look at who needs to be involved. This Group will look at;



- how to support people with learning disabilities when they go in hospital.
- how to help GPs and dentists support people with learning disabilities.
- how to help people with learning disabilities access mainstream local services.
- helping people with learning disabilities have a Health Action Plan.



Janet Wright explained why some of the groups no longer exist and suggested ways in which future groups could be supported. A form will be used which sets out clearly the role of a group, who will lead the group, who will report from the group and how often, the timescale for the work and the funding arrangements. Inclusion North will also be asked to support the groups. Money not already spent from the Development Fund will be given to the agreed Task Groups.



Janet Wright asked the Board members and guests to split into groups, look at the Commissioning Intentions from the draft Joint Commissioning Strategy and decide which Task Groups need to be developed and what their task should be. The feedback from this work will form part of a special meeting which the Board members agreed to attend to look at the Strategy and Task Groups. The results of which will be brought back to the Board meeting in September.



A member of the public asked the Board to consider looking into peoples individual problems rather than setting up a Task Group adding that it could then approach organisations on the individual's behalf (like an advocate). However, the Board said it could not investigate individual problems or complaints. It was agreed this was an interesting idea and the Board could consider being a champion for certain issues. Dave Rosser reminded people of the need for confidentiality and that not all issues could be discussed in public.



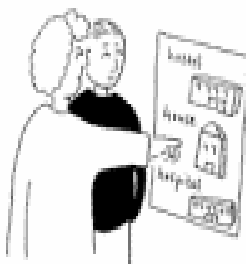
Open Forum

Ray Wilk introduced this new item which gives guests the opportunity to raise issues.



Special Event for People with Learning Disabilities

Sheena Kelly, Service Manager of Leeds Community Mental Health told the Board about an event which is taking place at Pudsey Civic Hall on Wednesday 11th October 2006 called 'A Great Big Health Check'. There will be lots of stalls giving advice about things like healthy eating, stopping smoking, drinking alcohol, fitness and exercise, men and womens health issues. For further information please contact Sheena Kelly - telephone 0113 3055377.



Person Centred Planning

Cathy Wintersgill, from Connect in the North, gave an update on what happened at two meetings held to look at Person Centred Planning in Leeds. The first meeting on 19th May 2006 (called **Making it Happen**) was attended by over 30 family carers and staff. The second meeting held 26th May 2006 (called **My Way Not Your Way**) was attended by 30 people with learning disabilities. Copies of the reports from these meetings were handed out and are available from Connect in the North – telephone 0113 2703233.

Ray Wilk suggested Partnership Board members should work with Connect in the North to go through the recommendations and actions from these reports.

Roseville Enterprises



An employee from Roseville Enterprises told the Board about the financial difficulties facing the company and asked for the Board to help. Roseville, who make things like windows, have been facing tough competition from other companies and may have to close. Many of the employees have learning disabilities and are worried about losing their jobs.



Dave Rosser commented that whilst Roseville Enterprises is not managed through learning disability services, the Partnership Board will send a letter of support.

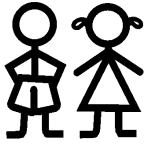
Alternative Venue for Meetings

A member of the public asked if the Partnership Board meetings could be held at Moorend Adult Training Centre.



Ray Wilk welcomed the idea but added all Board meetings have to be held in places that are big enough to hold many people, have the right health and safety measures in place and are able to provide the catering for so many people.

children



Better Day Services for Children

Karina Jenkins talked about how difficult it can be for children with learning disabilities to find things to do, especially during the school holidays.

Ray Wilk thanked Karina Jenkins for sharing her experiences with the Board and agreed this issue should be looked at through the transitions process.

Learning Disability Research Workshop

Andrew Walsh told the Board about a workshop to be held on 28th June 2006 called Valuing Health in Leeds.

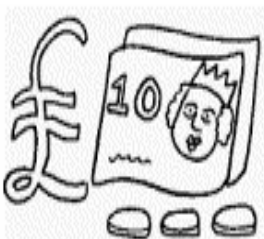
Housing Adaptations

A member of the public, who is also a carer, talked about the difficulties of getting help towards housing adaptations to her property.

Dave Rosser said the adaptations process is quite complicated and suggested inviting the Disability Services Manager to attend the Partnership Board meeting to explain the adaptations process. Ray Wilk added that as this issue seems to be a common problem for carers, it should be brought back to the Board for a future meeting.

Finance

Bill Walton raised the issue of organisations trying to plan work without knowing the funding arrangements and requested access to all financial information. Dave Rosser confirmed there would be a financial report at the next Board meeting. Nancy Hill added that the Learning Disability budget as a whole has many parts to it and is very complicated but the Partnership Board involvement will be limited so further information would be helpful. It was suggested that the Partnership Board could either have a presentation which explains the complicated funding arrangements or attend a special meeting just about finance.



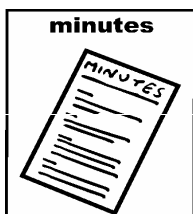





Report from Partnership Executive meeting held 15th June 2006 - Dave Rosser

Dave Rosser told the Board what was discussed at the last meeting.



- Peter Lister presented the Joint Commissioning Strategy but said more work needs to be done. The document will be signed off in September.
- Ray Wilk requested that the Partnership Board receive a timetable of when the Strategy will be available, the date when it will be implemented and how each year will be funded.
- Michele Moran (Executive Director Leeds Mental Health Teaching NHS Trust) asked the Partnership Executive to discuss the Therapy Review (proposal to merge the therapy services and create a therapy co-ordinator post). Ray Wilk questioned whether the cost of the proposal (£70,000) would have a knock on effect for Service Users. He also felt people needed more information and asked Sheila Dunham to present this as a major item at the next Partnership Board meeting. The Therapy Review will be fully presented to the Partnership Executive meeting on 13th September 2006.
- Janet Wright gave a report on the contract and procurement process.
- The accessible minutes will be available on the Through the Maze website although currently there is no worker. Any person without access to a computer can contact Louise Mills (telephone 0113 247 8894) for a paper copy of all the previous accessible minutes.
- A PFI bid has been made to build 3 swimming pools in Leeds and it is hoped 1 will include a hydrotherapy pool.



	<ul style="list-style-type: none"> • The Otley Chevin project is nearly complete. • A plan for future Partnership Executive meetings was issued and is also attached with these minutes. 	
	<p><u>Report and update from Partnership Board Chair and Co-Chair</u></p> <ul style="list-style-type: none"> • Ray Wilk was interviewed with Philip Hawley for the Through the Maze newsletter. • After hearing the Day Services Modernisation plan was being delayed, Ray Wilk wrote a letter to the Cabinet requesting the plans be kept on the agenda. This has now been agreed. 	
	<p>Art Exhibition</p> <p>Julia Pygott and Maggie McCool from Pyramid of Arts talked about the paintings and art work displayed at the Partnership Board meeting. They received a grant from the Development Fund to work with Ramshead Wood to produce high quality creative projects in the centre. The articles on display were an example of the work that has been produced.</p>	
	<p>Close of Meeting</p> <p>Ray Wilk and Michael Cass thanked everyone for attending the meeting and for all their hard work.</p>	
	<p>The next Partnership Board meeting will be on</p> <p>Tuesday 19th September 2006</p> <p>10 am till 2 pm</p> <p>St Matthias Church Centre, St Matthias Street, Leeds LS4 2DZ</p>	