



Welcome and Introductions - Ray Wilk

Ray Wilk welcomed everyone to the meeting. The Board Members gave their names and explained their positions on the Board.



Members who attended the private Partnership Board review meeting on 23rd February agreed that sitting together on one table worked well when trying to discuss business matters and wanted to try the same layout at this meeting. Board Members would then join the guests for group work.

Two new members were introduced to the Board:-



Cathy Wintersgill, employed by Connect in the North, has been invited to work with the Partnership Board as the Person Centred Planning Co-ordinator.

Kashif Ahmed, has been appointed as the new Partnership Board Diversity Director. The post is being funded by the Learning Disability Development Fund and People in Action are the organisation who will be hosting Kashif's post.

Ray Wilk announced that the Board had also lost two members; Sheila Quinn and Glen Swindell.



Sheila Quinn had a place on the Learning Disability Service User Reference Group and represented Leeds Women First. As Leeds Women First no longer exists she cannot continue in that position. Ray Wilk said Sheila has been a very valuable, active member of the Board and will be missed. It is hoped she will continue to attend Board meetings in the future as a guest.

Glen Swindell, who works for Keyring and was a member of the Learning Disability Voluntary Sector Forum, is unable to continue on the Board due to work he has to do in Oldham. He was also thanked for his contributions to the Partnership Board. Fran Jeffries, employed by Mencap Pathway, has agreed take over from Glen on the Learning Disability Voluntary Sector Forum, on a temporary basis.

Task Group Updates

Self Directed Support Task Group – Scott Cunningham

When Scott Cunningham met with Ray Wilk and Janet Wright to look at membership of the Task Group, it was agreed he would look into Self Directed Support, talk to people from around the country who have started using it and report back on what he had found. These are some of the things people said:

- Self Directed Support will not happen unless the 'top people' with knowledge and power sign up to it
- Everybody should be able to have Self Directed Support, not just those with learning disabilities
- Need to build on what you have now or change how you currently spend money

People at the meeting then discussed Self Directed Support in more detail and raised the following issues:-

- A survey is needed because it is not known how many people want Self Directed Support. Some may not want to organise services themselves when they have a good care manager who does it for them
- When Direct Payments are offered, few people accept and we need to find out why
- Self Directed Support needs to be explained properly. Some people do not know what is available or think it will be too complicated
- Social Services money is currently tied up with current services and needs to free some of that money to spend on Self Directed Support

Pete Vickers reminded the Board that QUIPS (Quality Inclusive Pathways) starts in September 2007 and Self Directed Support would make an ideal project for them to work on.





Dave Rosser confirmed that discussions are taking place with senior members of the Council regarding 'In Control' and Self Directed Support. When the Council start big projects they use a tool called a Project Initiation Document (PID) which Dave Rosser agreed to bring to the next meeting. The Board can look at the document to see how the Board can be involved in the Self Directed Support project. He added that Self Directed Support would eventually be offered to all adults, not just those with learning disabilities and agreed to inform the Board if he receives any information before the next meeting in June.

Dave Rosser

All agreed this is a big piece of work and as soon as the 'top people' sign up to it, membership and the work of the Task Group can be decided.

Health Task Group – Sheila Dunham



Sheila Dunham reminded the Board of the areas of work the Task Group have been asked to look at and also gave an update on what is happening.

Membership of the Task Group has not been agreed. As each issue is so big, the group may need further advice from the Board on what things to concentrate on.

Cancer Screening

Dr Simon Barnaby suggested the Task Group look at the national screening project for cervical and breast cancer (testicular cancer is not included in this project). Adults with learning disabilities need more accessible information about cancer. Without a database, there is no way of knowing who is going for screening.

Obesity

Research suggests that adults with learning disabilities are at high risk of being overweight. Sometimes a person can be overweight because of the medication they have to take, sometimes it is due to lack of exercise and poor diet. As part of a 3 month pilot study, 50 adults with learning disabilities are attending weekly gym sessions, receiving advice on fitness and healthy eating.





Diabetes

Adults with learning disabilities who have diabetes are entitled to yearly health check-ups. More accessible information should be made available.

Mental Health Green Light

This is a toolkit for improving mental health support services for people with learning disabilities. It provides a picture of what services should be aiming to achieve and is for the Mental Health Local Implementation Teams and Learning Disability Partnership Boards.

As it is such a big document, Sheila Dunham agreed to make it into bite size pieces of information and feedback later.

Ray Wilk thanked Sheila Dunham for her report and agreed it is a very big task.

People at the meeting discussed the update in more detail and made the following points:-

- Dave Rosser said that as part of the Modernisation of Day Services, closer links have been made between Social Services and Leisure. Local gyms have got Sports Council funding to make their facilities accessible and easier to use. More information will be available later.
- The question of whether to have a learning disabilities register was raised again as this would help identify uptake of health screening for cancer and other illnesses. However, people were reminded that some Service Users had raised concerns over the connotations of such a register (people didn't want to be labelled). The information could only be supplied on a voluntary basis and there were data protection issues to think about.



Carers Reference Group – Janet Wright

Jackie Reynolds was unable to attend the Board meeting but had sent the minutes from the first Carers Reference Group meeting held on 1st March and the draft Terms of Reference. Janet Wright read through the minutes.

- Further discussions will take place around representation on the Partnership Board and 3 carers will be selected at the next Reference Group meeting.
- The size of the Reference Group was discussed and will be reviewed later.
- The Reference Group made a list of things they wanted to concentrate on.
- Next meeting to be held Thursday 17th May 2007.



The Board were then asked to consider:

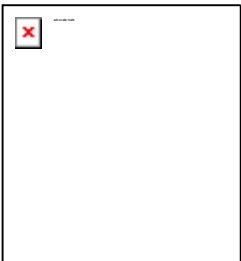
- Paying for carers to attend the Partners in Policymaking training course. (These carers would then share this information and training with other carers).
- Paying for carer involvement.



Ray Wilk requested the Terms of Reference be sent to each Partnership Board member for approval and if each member could state whether they support members of the Carers Reference Group in attending the Partners in Policymaking course. All responses to be sent to Louise Mills.

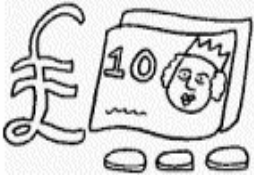
Louise Mills

Board Members



Advocacy Reference Group – Paul Seccombe

Paul Seccombe is now the Chair of the Advocacy Reference Group. At the last meeting in March, the group agreed to have two special meetings after Easter. The first meeting will look at the Mental Health Capacity Bill and the second meeting will be with Tim O’Shea who is the new Head Of Adults Commissioning for Social Services. Later in the year there will be a Mental Health Advocacy Service and it was proposed this item should be added to the Partnership Board agenda for further discussion. The Reference Group also expressed a wish to work with Inclusion North.



Finance Update – Khalid Arian and Janet Wright

Khalid Arian presented a breakdown of where the money comes from and what services it pays for. He pointed out that the money he was discussing at the meeting did not include service users own money and agreed to send out a full finance report at the end of the financial year. Here are some of the main points from the presentation:-

- There are 2127 adults with learning disabilities known to Social Services in Leeds
- £72.5 million is the total amount of money allocated to be spent on adults with learning disabilities:-

Social Services	£34.9 million
Health	£25.1 million
Supporting People	£12.5 Million

People at the meeting were asked to split into 4 smaller groups for a group work exercise to look at how the money is spent. The group were then given the approximate amounts of money Leeds is going to spend this year:-

- £1.5 million on respite
- £2 million on transport
- £11.7 million on day services
- £26 million to support people living in their own tenancies
- £22 million on residential placements

Learning Disability Development Fund Money

This money comes from the Government to the Primary Care Trust to support making Valuing People happen. It is money that was originally spent on paying for people who lived in long stay hospitals. Following a count of these people the Primary Care Trusts in Leeds had £2 million taken from their budget. This year Leeds was then given back £624,000 of Development Fund money. Some of the money had to be used to fund activities already happening which would have had to be stopped.

Leeds has continued to support projects and allocated Development Fund money to the

following:-

- ◆ Older Carers Support Service
- ◆ Person Centred Planning
- ◆ Service User Involvement
- ◆ Mental Health and Housing advocacy
- ◆ Ethnicity Director post
- ◆ Inclusion North
- ◆ Carers Reference Group
- ◆ Service User Reference Group
- ◆ Partnership Board Expenses
- ◆ One-off Grants

Task Groups have been invited to bid for some of the Development Fund money. To date, no requests had been received.

A Board Member requested a copy of next years budget. Khalid Arian agreed to bring this to the next Partnership Board meeting.

People at the meeting were asked to say what they thought are the important things Leeds should spend money on and came up with the following suggestions:-

- Switch money spent on buildings to support people to use community facilities
- Reduce Day Centres and provide other activities instead
- Self Directed Support
- College and training

Janet Wright pointed out that the financial statistics do not show all the unpaid work done by carers.

It was agreed that the financial update had been very useful but more time should be spent on this at the next Partnership Board meeting in June.

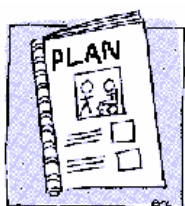
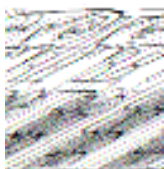
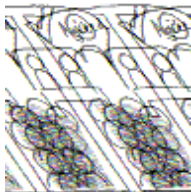
Khalid
Arian





Khalid
Arian

Updates

Joint Commissioning Plan

The Plan was circulated in draft form last year. The action plans for the draft Plan have been delayed because of the changes in the Primary Care Trust and Social Services structures and will be completed when all new staff members have been



	<p>appointed. The new structure will be in place from April 2007. Janet Wright will be managed by Tim O'Shea and will look at taking things forward. It was agreed there would be a further update on the progress of the Plan.</p>	<p>Janet Wright</p>
	<p><u>Friendship and Dating Agency</u> David Hansen informed the Board that a development worker will be appointed to support the development of a Yorkshire branch of Stars in the Sky – a friendship and dating agency. It was agreed that this item could be added to the agenda for the Partnership Board meeting in June.</p>	
 	<p><u>Service User Reference Group</u> Jon Rudette read out a report from the last Reference Group meeting and told the Board who had come to talk to them. Copies of this report were also handed out.</p> <p>Janet Wright explained that the Service User Reference Group is a very successful group with many people attending. Unfortunately, too many people are now coming to the meetings and the numbers will have to be reduced. A letter will be sent out soon confirming who is a member of the Service Users Reference Group.</p>	
	<p>Ray Wilk thanked everyone for attending the meeting.</p>	
	<p>The next Partnership Board meeting will be held on</p> <p>Date: Tuesday 19th June 2007</p> <p>Time: 10 am till 2pm</p> <p>Venue: St Matthias Church Centre, St Matthias Street, Leeds LS4 2DZ</p>	