



Welcome and introductions

Ray Wilk welcomed everyone to the meeting, including the 4 new Board Members – Claire Reed, Christine Barker and Gina Gage who were representing the Learning Disability Reference Group and Harold Wilson from the Carers Reference Group.

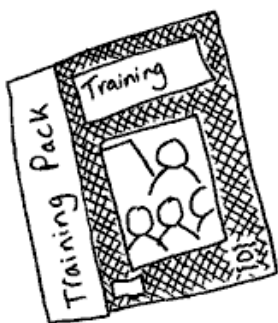
Updates and Actions from the last meeting.

Through the Maze Information Service.

Amanda Dagnall sent out a questionnaire and visited various groups to find out what people would like to see on the website and in the next directory. Amanda has not received many completed questionnaires and Janet Wright pointed out that as a lot of people want an information point, they should support Amanda in its future development.



Partnership Board



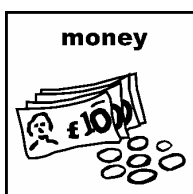
Carers Training Course

The issue regarding who can attend the Partners in Policymaking Training Course has been resolved and members of the Carers Reference Group will be attending a local course in the new year.

Learning Disability Development Fund

The notes from the meeting held 2nd October stated the item on the Development Fund was misleading. It was noted that this was incorrect. Janet Wright and Ray Wilk agreed to draft an amendment. The Partnership Board will need to discuss the Development Fund in more detail at a future meeting as there may be big changes in the way it is allocated nationally.

Janet Wright
Ray Wilk





Interim Partnership Executive

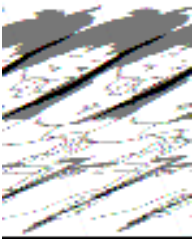
Following the changes within the Primary Care Trust and Social Services, senior managers are now in the process of establishing a new Partnership Executive. The second meeting will be held 5th December 2007. Ray Wilk will continue to attend as a representative for the Partnership Board.

Individualised Budgets / Self Directed Support



The Leeds City Council project team who came to the October meeting to talk about Individualised Budgets has confirmed that people with learning disabilities in Leeds will be the first to try the new system of Self Directed Support. Further information will be sent out in the future.

Learning Disability Performance and Self Assessment Framework



The Primary Care Trust has appointed Norman Campbell to take this piece of work forward. Norman will be working with Tabitha Arulampalam and with mainstream health services. Further details of this will be shared at a later date.

Learning Disability Reference Group



The Reference Group held a big open meeting on 6th November. People were given an update on what had happened at the last two Reference Group meetings; Amanda Dagnall came to talk about the Through the Maze Information Service and Kath Rooksby from PALS (Patient Advice and Liaison Service) asked if anyone had any problems relating to hospitals. The group then had



elections to fill the 3 places available on the Partnership Board.

Ray Wilk thanked the Reference Group for all the hard work and effort they put into things and asked that former representatives of the Reference Group also received these words of appreciation.

Carers Reference Group

Jackie Bolland talked about the Carers Reference Group and work they had been involved with recently:

- Members attended a very useful Mental Capacity Act meeting and now have a CD and leaflets for people to look at. Inclusion North has also offered support in training on this subject.
- Bridget Maguire (Social Services Carers Implementation Manager) has agreed to talk to the carers about the new Carers Strategy.
- Carers will be involved in the selection of new service providers for the Independent Living Project and Les France, the Project Change Manager, will be coming to discuss this in further detail.

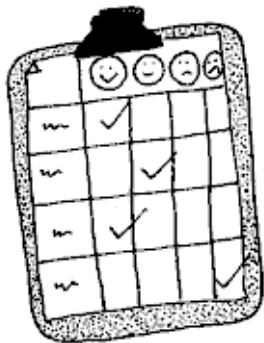


Ray Wilk talked about the pressure carers are under and said it is appreciated when they are able to attend meetings.

Ethnicity Reference Group

Kashif Ahmed talked about the equality questionnaire sent out to organisations and sub groups of organisations, which looks at how they are doing in relation to equality. It also identifies organisations that need more help in this area.





Out of the 39 forms sent out 22 were returned. An equality questionnaire report was handed out at the meeting and Kashif explained parts of the report in more detail. Some people had been unable to answer all the questions and one of the reasons for this is that people use different categories and ways of describing things. Kashif also pointed out that statutory services have a legal duty to complete Equality Impact Assessments. The Ethnicity Reference Group will ensure all its members will have written guidance on how to do equality monitoring and will try streamline the monitoring categories (use the same words). Training will be available on Equality Impact Assessments and a workshop is planned for managers.

Day Services Modernisation

Elected Members had asked Ivan Barnett to have more discussions with carers / service users and staff to find out how they thought day services should be modernised. The city was divided into 7 areas and each area set up a Consultation Board made up of carers, staff and service users and an independent chair to talk about the plans for the local area. Ivan sent out the proposals drawn up by the Consultation Boards and asked for peoples opinions. 65% responded and out of those, 95% were in favour of the proposals. Some of the proposals and issues raised include:

- Provide more flexible services in evenings and weekends
- Provide smaller places within the community and not big centres in industrial estates or remote areas
- Maintaining friendships is very important

community



- New buildings, if required, should be ready before the others close.
- People do not want to travel long distances on the minibus to get a service

Next Steps

- A group will look closely at the specialist services (people with complex needs), as there is a growing demand for these services.
- The cost of these plans needs to be calculated and put in a business case.
- We need to make sure the plans fit in with what the *Valuing People Now* document says we should be doing
- The plan must also fit in with the Personalisation (Self Directed Support) agenda and Independent Living Project.

Questions from the Board

Q. Will the staff at the centres be the same or will some lose their jobs?

A. Ivan said more staff would be needed in the future.

Q. Is there a commitment to funding the project?

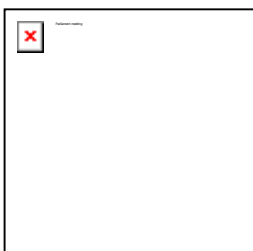
A. Yes, providing the Executive Board agree with the proposals

Q. When will we find out?

A. May or June 2008

Q. Are the proposals for the 7 areas available to anyone?

A. The proposals are available but it is important to remember they are the proposals drawn up by the Consultation Boards, not the Council.



It was pointed out that the Voluntary Sector had not been included in the consultations and they may be in a position to deliver services that are outside the current services.

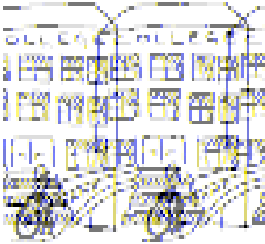
The Board was reminded that Ivan had carried out the consultation at the specific request of the Elected Members.

Ivan particularly wanted to thank members of Leeds Advocacy for their help in the consultation process.

Paul Broughton, Chief Officer within Leeds City Council introduced himself and explained that he had come to work with Social Services. The focus of his work is to look at the big projects like Day Services Modernisation. He pointed out that Leeds needs to make sure the decisions made are the right ones for service users and carers and provide greater opportunities in the future. With the introduction of individualised budgets, people will have much more choice over how they spend their time and people need to think whether they actually want to stay in buildings. Leeds does not want to build new centres only to find they are empty because people have better day opportunities. The final decision regarding funding will be made by Elected Members.

It was pointed out that Elected Members tend to receive information from the minority of people who are not in favour of day services modernisation rather than the majority who do want it and this needs to be addressed. The Board should play a much bigger role in helping people make the right decision.

Partnership Board



Further discussions took place around the problems with further education and employment in relation to day services and it was agreed this issue must be brought to a future Board meeting.

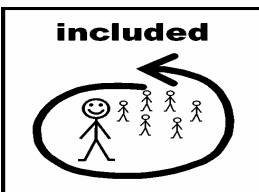
A Board Member advised the Board that the new term for 'Modernisation of Day Services' is 'Day Opportunities'.

Healthcare Commission Report – A Life Like No Other



Carol Cochrane explained that the Healthcare Commission (who supports health services to do a better job) had done a national audit because they had found problems in some NHS services for people with learning disabilities. Some people were being abused where they lived, some were badly treated because of how services were organised. They were also worried about some independent services not run by the NHS. This report provides a summary of their findings from the audit. The Partnership Board will need to look at the report and then work with commissioners to decide what kind of health services should be in their area in the future. This report will also go to the Partnership Executive.

All Means All Event – 31st January 2008



Scott Cunningham told the Board about an event taking place at St Chad's Parish Centre which has been organised by the All Means All Group. The purpose of the event is to provide information, advice and fun for people with learning disabilities who need a lot of support. The day will give people with learning disabilities, their carers and the paid



support staff, the opportunity to find out more about things that could make their lives better. The Partnership Board were invited to join in the event and agreed to discuss their involvement at the next private meeting.

Independent Living Project

(The £65 million project to remodel residential services for adults with learning disabilities and mental health needs)



The Partnership Board invited Les France to come to the meeting and provide an update on the project.

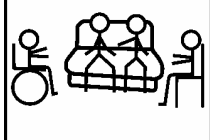
The Project Team have spent a lot of time consulting with people, looking at building designs and costs and have now finalised the arrangements for who will design and build the new accommodation and look after the properties when they are finished. Hopefully the contract for the work will be signed in March 2008 and the building work will start in May 2008.



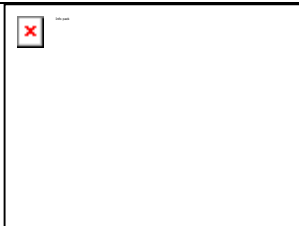
Work is currently underway to identify organisations that will provide the support for people to live in their own homes. As some people may need help with things like gardening and cleaning, for example, there may be job opportunities for adults with learning disabilities and the Project Team will be talking to organisations and social firms about this. People will also be supported in buying their own property.



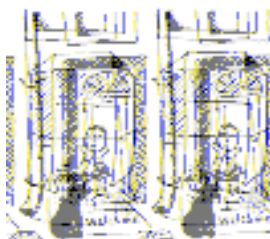
meeting



Project groups will look at each service to make sure nothing has been left out. Monthly meetings will be held throughout the life of the project.



Brochures are available for people to look at which have details of the proposed new homes although some slight changes have to be made.



Les advised the Board that as some service users want to live by themselves, Supporting People have made a commitment to work with the mainstream housing and ILP team to help with this.



Les asked the Partnership Board to work together and draw up a list of things that they feel are important, firstly, on the day a person moves home and secondly, once they have moved, what makes a home a home.



People at the meeting came up with lots of ideas and issues and fed back at the end of the meeting. Some of the things they said were important include:

- When moving into a new home, you should feel safe and secure.
- People need to live in a friendly environment and be able to keep in contact with friends
- Ensure service users are happy with the staff



The Board thanked Les for coming to the meeting and providing a useful update.

Partnership Board Questionnaire

Board members were asked to return their questionnaires to Louise Mills as soon as possible.



Partnership Board



Meetings in 2008

The Board had previously discussed the best way to hold meetings and voted in favour of having 2 **public** meetings and 4 **private** meetings a year. A handout was circulated with the following dates:

The **private** meetings will be held:

- Tuesday 11th December 2007 at St Matthias Church Centre
- Tuesday 15th January 2008 at Technorth, Harrogate Road
- Tuesday 17th June 2008 (time and venue to be confirmed)
- Tuesday 19th August 2008 (time and venue to be confirmed)
- Tuesday 9th December 2008 (time and venue to be confirmed)

The **public** meetings will be held:

- Tuesday 8th April 2008 (time and venue to be confirmed although it is likely this will be a full day event)
- Tuesday 14th October 2008 (time and venue to be confirmed although it is likely this will be a full day event)