

Through the Maze

A guide to learning disability services and opportunities in Leeds



2002 edition

Community Care Assessment Help and Advice Children Transition Choice and Control
Supporting Carers Short-term Breaks Good Health Housing Money and Benefits
Education and Life-long Learning Leisure Transport and Equipment Employment



Contents

Introduction 1

Chapter 1 Community Care and Assessment 5

Chapter 2 Help and Advice 11



Chapter 3 Children 26



Chapter 4 Transition into Adulthood 42



Chapter 5 Choice and Control 46



Chapter 6 Supporting Carers 62

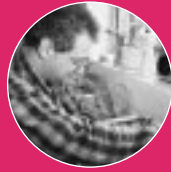


Chapter 7 Short Breaks (Respite) 66



Chapter 8 Good Health

76



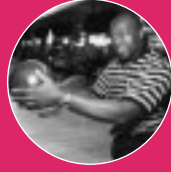
Chapter 9 A Place to Live

86



Chapter 10 Education and Life-long Learning

94



Chapter 11 Leisure

102



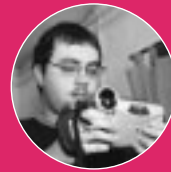
Chapter 12 Transport and Equipment

124



Chapter 13 Money and Benefits

130



Chapter 14 Moving into Employment

138

Quick Reference Index

146

Introduction

Why another directory?

We wanted to update the 1999 directory because there have been so many changes that are having a positive effect on the lives of people with learning disabilities in Leeds.

We felt a new directory would be a good way of telling lots of people about these changes. Many of them have resulted from the Government White Paper 'Valuing People'; including the Leeds Learning Disability Partnership Board where people with learning disabilities are involved in making decisions that can improve services and people's lives.

This directory is for people with learning disabilities, their carers and professionals, who were all widely consulted about its format and content. As a result, it is not a traditional directory. It includes information to help people understand new ideas that can affect their lives.

We have included a new quick-reference section at the back of the book to help you find contact details more easily. However if you are not quite ready to phone someone up from the directory, or if you want more information about a particular organisation, you can contact the Through the Maze Information Service first.

We hope you find this directory useful.

Jo Blackburn and Louise Wood

This directory was funded by

Leeds Social Services Communications section

The 2002 edition was produced by

Jo Blackburn, Information Officer for Through the Maze Information Service and Louise Wood, Information Officer for the Joint Commissioning Service for People with Learning Disabilities.

We would like to thank

Our special thanks to Jamie Kirk, Wendy Collins, Marion Crabbe, Shannon Curram, The Family Keyworker Project, Steve Harris, Dean Milner, Paul Moseley, Mike Sells, Bill Walton, Helen Wheat, Janet Wright; and to everyone else who contributed to the 2002 edition.

Keeping up to date

Great care has been taken to make sure that the information in this directory is accurate and up to date at July 2002. We cannot, however, take responsibility for mistakes or things that are left out.

Most of the information will also be available on a computer database and on the internet, which will be regularly updated by Through the Maze Information Service – [see page 11](#). If you are aware of changes and additions that need to be made, please let them know.



Telephone numbers

All the telephone numbers in this directory are Leeds numbers unless otherwise stated. This means that if you are calling from outside Leeds you must add 0113 to the beginning of any Leeds number.

Approval

Inclusion in the directory does not necessarily mean that we recommend or approve of the organisations listed, and we cannot be held responsible if they do not prove satisfactory.

More copies of the directory

Copies of this directory are available from One Stop Shops, libraries, Through The Maze Information Service – [see page 11](#) – or from the **Social Services Main Office, Merrion House, 110 Merrion Centre, Leeds LS2 8QA.**
☎ 247 8924.

Government White Paper – ‘Valuing People’

On 20th March 2001 the first Government strategy on learning disabilities for 30 years was launched. This is the **White Paper ‘Valuing People’: A New Strategy for Learning Disability for the 21st Century**. It outlines how the Government aims to improve the lives of people with learning disabilities, and those of their families and carers.

What does ‘Valuing People’ say?

- There are 4 key values in ‘Valuing People’:
 1. Legal and Civil Rights
 2. Independence
 3. Choice
 4. Inclusion
- It looks at problems and challenges faced by people with learning disabilities at every stage of their lives, and makes proposals as to how these can be overcome.
- It says the only way to improve the lives of people with learning disabilities is for everyone to work more closely together (partnership working).
- It says how change will be brought about. This includes:
 - the creation of a national Learning Disability Task Force, a Learning Disability Development Fund, and an Implementation Support Team.
 - setting up local Partnership Boards who will write annual Joint Investment Plans – [see page 46](#).
- It outlines a 5-year implementation programme that details objectives, deadlines, and performance indicators. This will help to make local agencies and the Government more accountable for improving the lives of people with learning disabilities.

Some of the improvements suggested by the Government are:


- a 5 year programme to modernise day services
- a Learning Disability Awards Framework to help raise qualification levels among care workers.
- developing specialist local services for people with behaviour that challenges services.
- wider implementation of Person-centred Planning and encouraging greater take up of direct payments – [see page 50](#).

Copies of ‘Valuing People’ are available from the **Department of Health Stationery Office (quote Reference Cm 5086) PO Box 29, Norwich NR3 1GN** ☎ 0870 600 5522.

The following symbols are used throughout the document

 Telephone

 Fax

 E-mail

 Website

Design: dg3 0113 228 5500/www.dg3.co.uk

Photos: Paula Solloway 01756 793568

Print: